

465

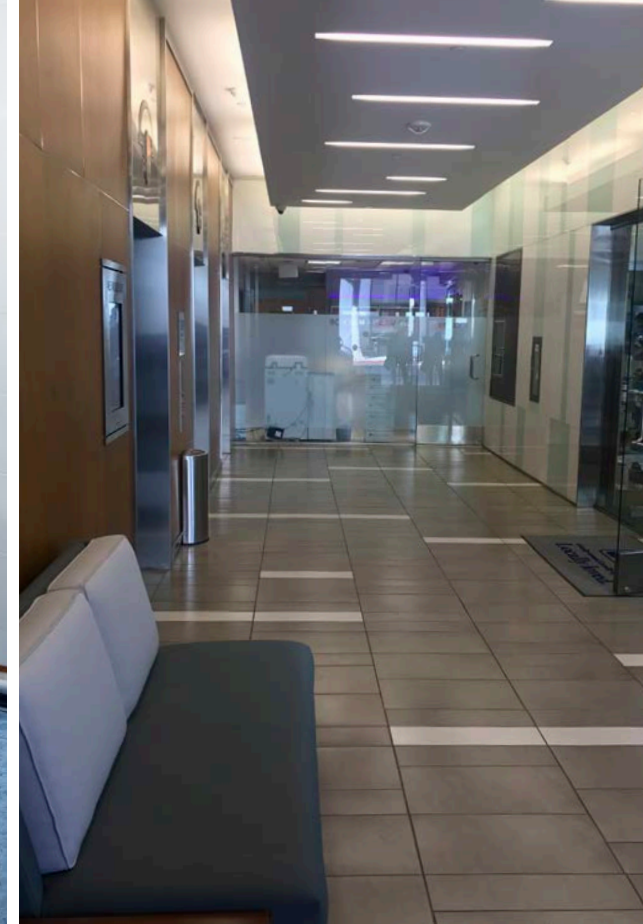
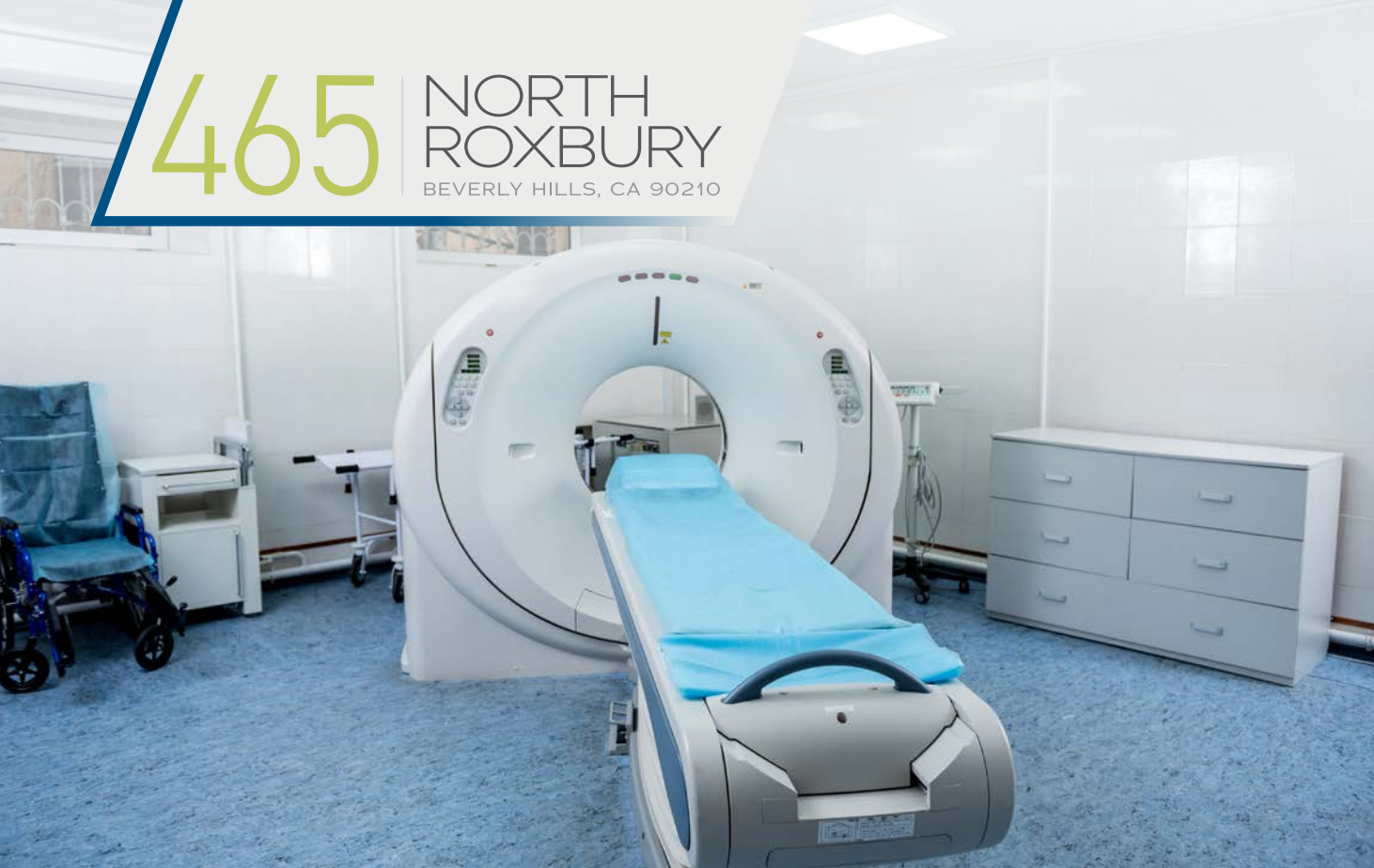
NORTH ROXBURY

Class A Beverly Hills Triangle
Medical Office/Retail
Ground Floor Availability



465

NORTH
ROXBURY
BEVERLY HILLS, CA 90210



Class A Beverly Hills Triangle Medical Office/Retail

Located in the heart of the prestigious Beverly Hills Triangle, this 11-story Class A Medical Office Building offers gorgeous city and mountain views and is within walking distance to world-famous Rodeo Drive and world-class restaurants. The building is within close proximity to the renowned Cedars Sinai Medical Center and UCLA Medical Center. The building has under-gone seismic retrofit, with new exterior skin and updated common areas.

PROPERTY INFO

AVAILABILITY: Suite 101: ±6,600 RSF

RENTAL RATE: \$7.00/RSF MG

TERM: 5 - 10 years

PARKING RATIO: 4/1,000 SF

Ownership recently invested \$5,000,000 in modern upgrades to the property.

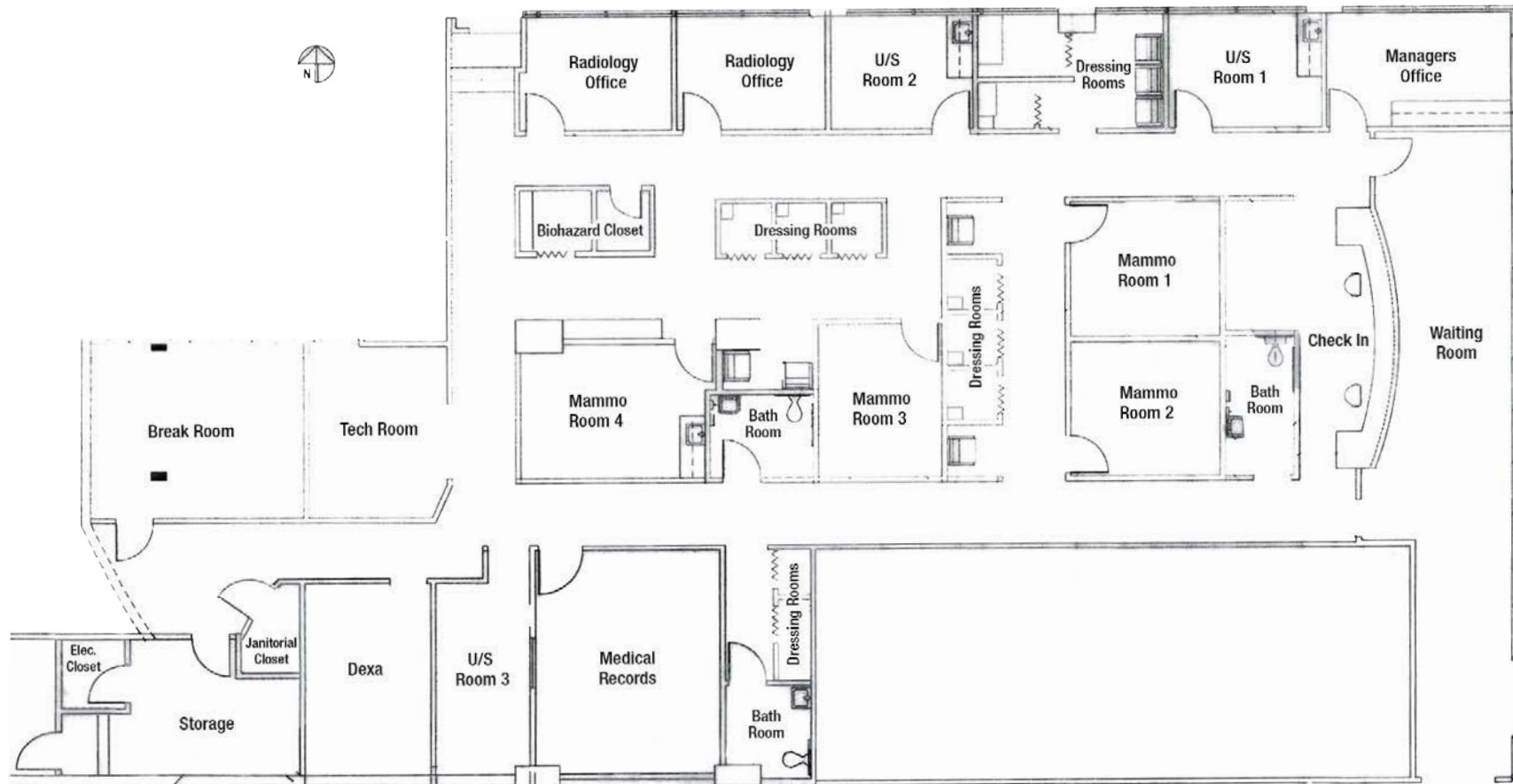
465

NORTH
ROXBURY
BEVERLY HILLS, CA 90210

Suite 101

±6,600 RSF

FLOOR PLAN



465

NORTH
ROXBURY
BEVERLY HILLS, CA 90210

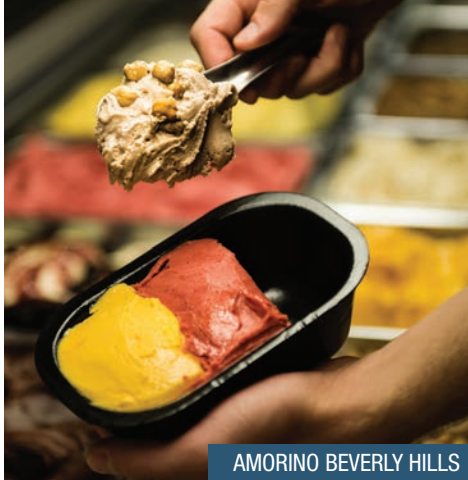
AMENITIES MAP



465

NORTH
ROXBURY
BEVERLY HILLS, CA 90210

SELECTED AMENITIES



AMORINO BEVERLY HILLS



OCEAN PRIME



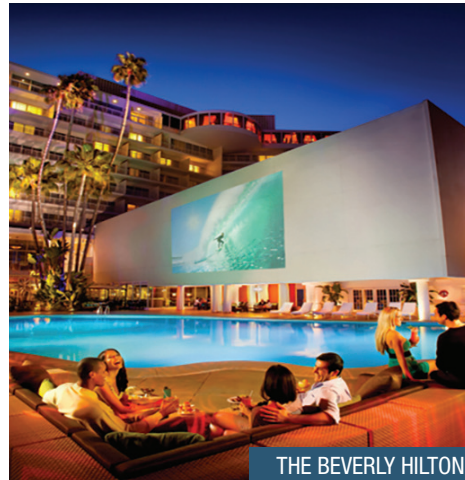
DIANE KRÖN CHOCOLATIER



BEDFORD & BURNS



YAZAWA JAPANESE BBQ



THE BEVERLY HILTON



CRUSTACEAN



SPRINKLES CUPCAKES