



**FREESTANDING OFFICE
BUILDING FOR LEASE**

9430
W OLYMPIC
BEVERLY HILLS, CA

9430
W OLYMPIC

PROPERTY OVERVIEW



9430 West Olympic Boulevard offers any user the opportunity to come and create their new dream office. 9430 West Olympic is creative space located in a highly coveted, amenity-rich pocket of Beverly Hills. This highly visible building sits at a signalized intersection and offers a prime opportunity for building-top signage. The building also boasts an outdoor patio, unique architecture and abundant natural light.

The property is located within walking distance to numerous restaurants such as Urth Caffè, Frida, and California Pizza Kitchen as well as Pavilions Market, Peet's Coffee, and South Beverly Grill. It also sits in excellent proximity to the famous Rodeo Drive and four Beverly Hills area hotels.

9430
W OLYMPIC

PROPERTY OVERVIEW

AVAILABLE SPACE

Entire Building Available

3rd Floor: Office ±7,466 RSF
4th Floor: Office ±7,454 RSF

TOTAL AVAILABLE ±14,920 RSF

ASKING RENT

\$3.75 PSF MG

TERM

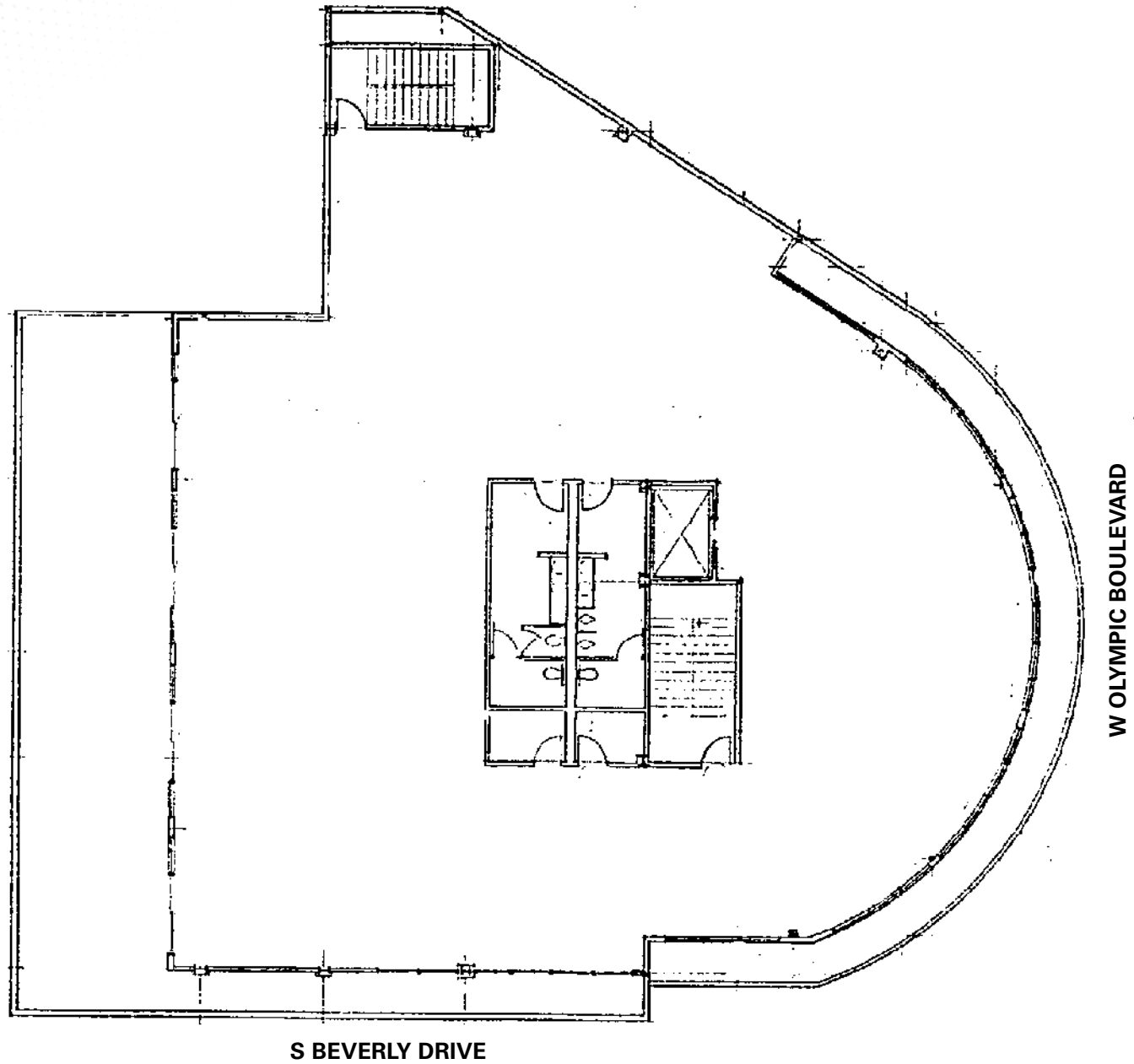
Negotiable

AVAILABILITY 4Q 2023

PARKING 2.0/1,000



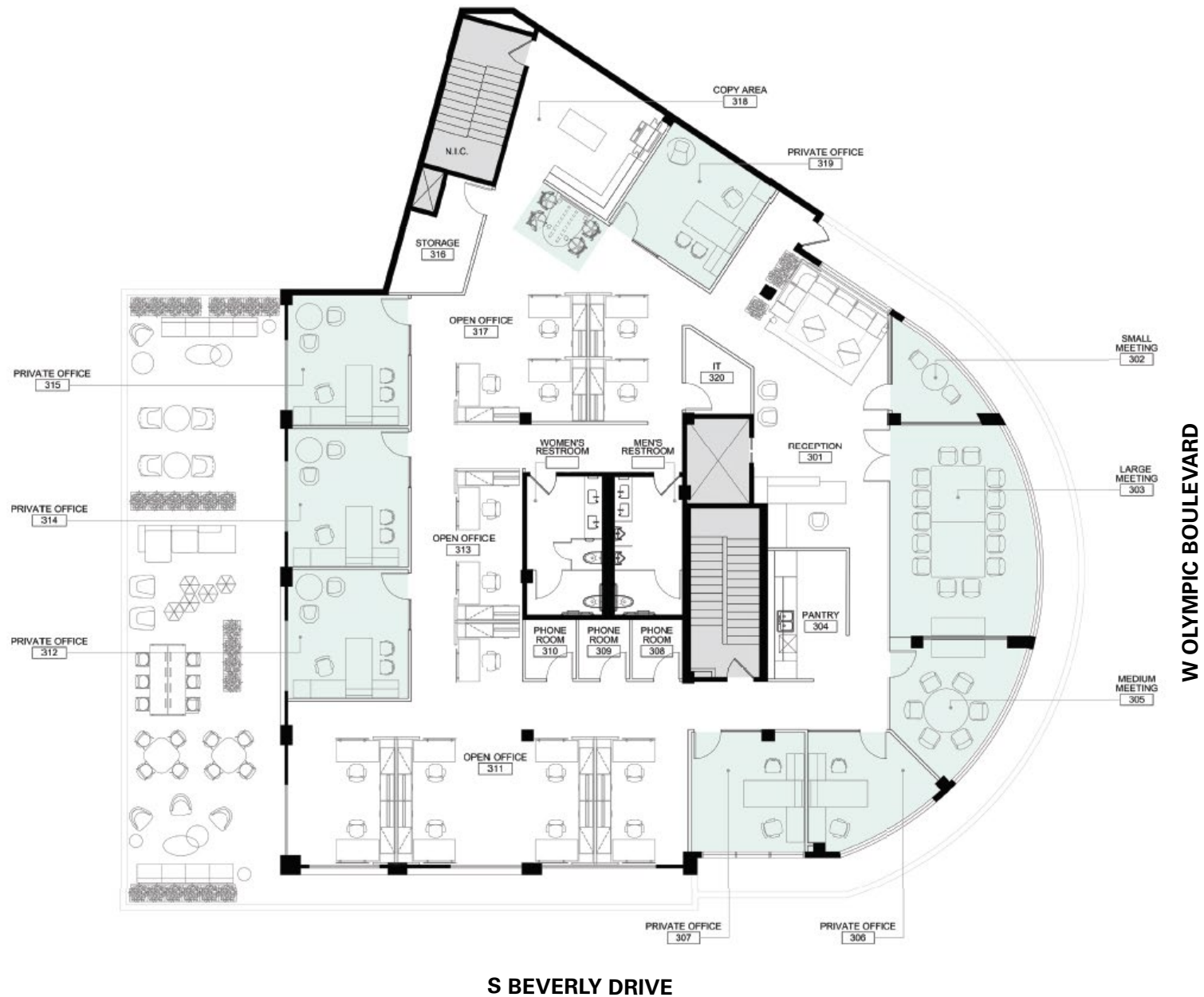
FLOOR PLAN - 3rd Floor - $\pm 7,466$ RSF



FLOOR PLAN - 4th Floor - ±7,454 RSF

[CLICK HERE FOR
PROPERTY VIDEO](#)

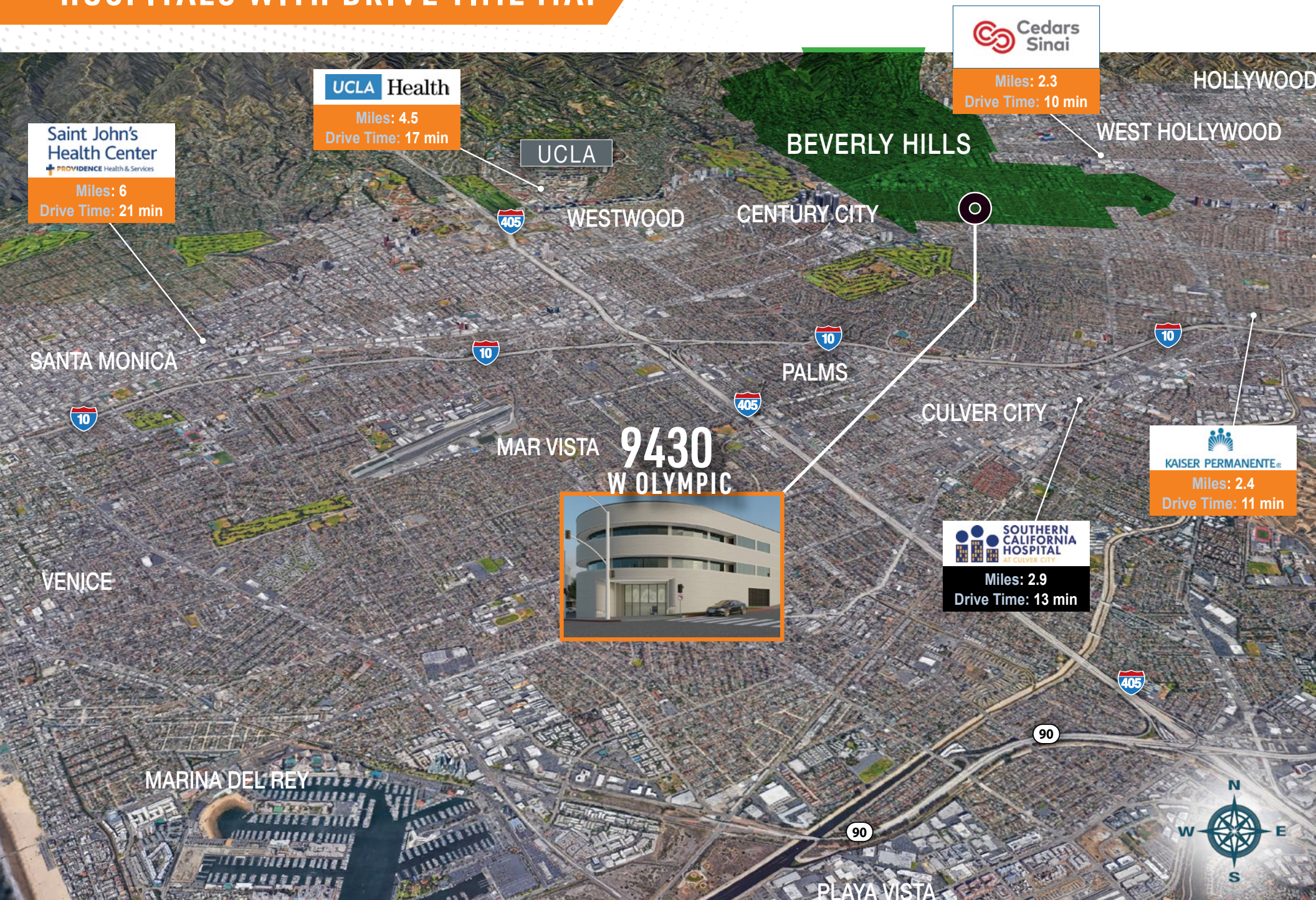
HYPOTHETICAL SPACE PLAN



AMENITY MAP



HOSPITALS WITH DRIVE TIME MAP



AREA NEIGHBORS



Urth Caffe



South Beverly Grill



Avalon Hotel



Beverliz Cafe



Upper Crust Pizzeria



Brooklyn Water Bagel



Burger Lounge



Frida Mexican Cuisine

