

9441 W OLYMPIC

BEVERLY HILLS, CA



MAJOR PRICE REDUCTION!

9441
W OLYMPIC

PROPERTY OVERVIEW



9441 West Olympic Boulevard offers creative space located in a highly coveted, amenity-rich pocket of Beverly Hills. This highly visible building sits at a signalized intersection and offers a prime opportunity for building-top signage. The building also boasts a top-floor outdoor patio, polished concrete floors, high ceilings, unique architecture throughout and abundant natural light.

The property is located within walking distance to numerous restaurants such as Urth Caffè, Frida, and California Pizza Kitchen as well as Pavilions Market, Peet's Coffee, and South Beverly Grill. It also sits in excellent proximity to the famous Rodeo Drive and four Beverly Hills area hotels.

9441 W OLYMPIC

PROPERTY OVERVIEW

AVAILABLE SPACE

Entire Building Available

1st Floor: Office ±11,704 RSF

Mezzanine: Office ±5,822 RSF

~~LEASED! 3rd Floor: Office ±9,971 RSF~~

TOTAL AVAILABLE ±17,526 RSF*

*SF not inclusive of 2,365 SF of patio space

ASKING RENT

\$2.40 MG

AVAILABILITY Immediately

FURNITURE & AV/IT EQUIPMENT Potentially available

PARKING 50 spaces in adjacent building
(350 S Beverly Drive)



9441
W OLYMPIC

PROPERTY IMAGES



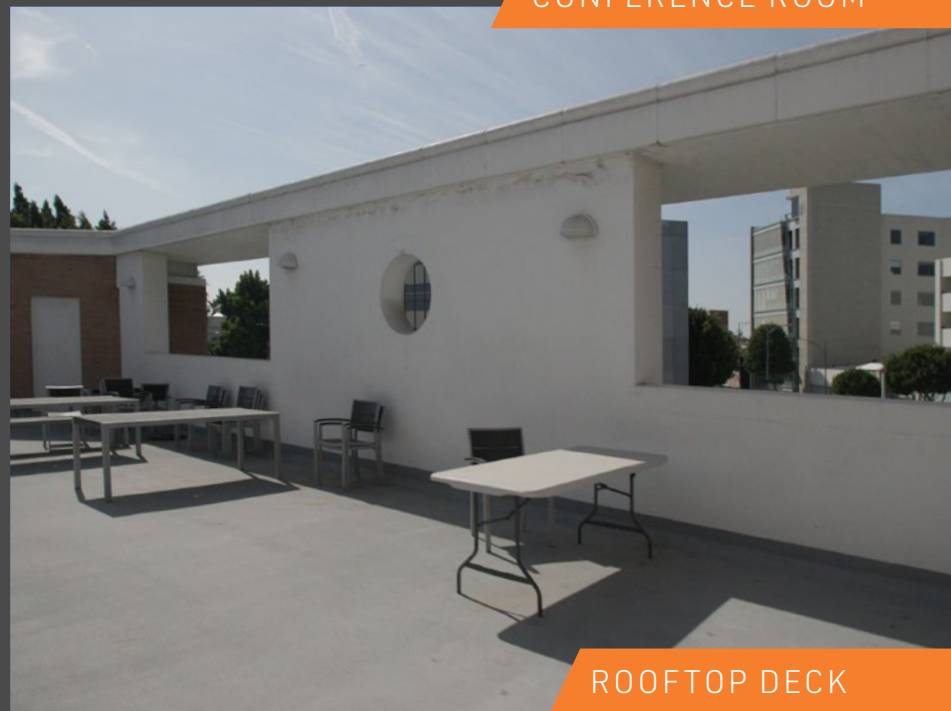
RECEPTION/ENTRANCE



CONFERENCE ROOM



OPEN WORKSPACE



ROOFTOP DECK

9441
W OLYMPIC

PROPERTY IMAGES



LARGE EXECUTIVE OFFICE



HIGH, OPEN CEILINGS



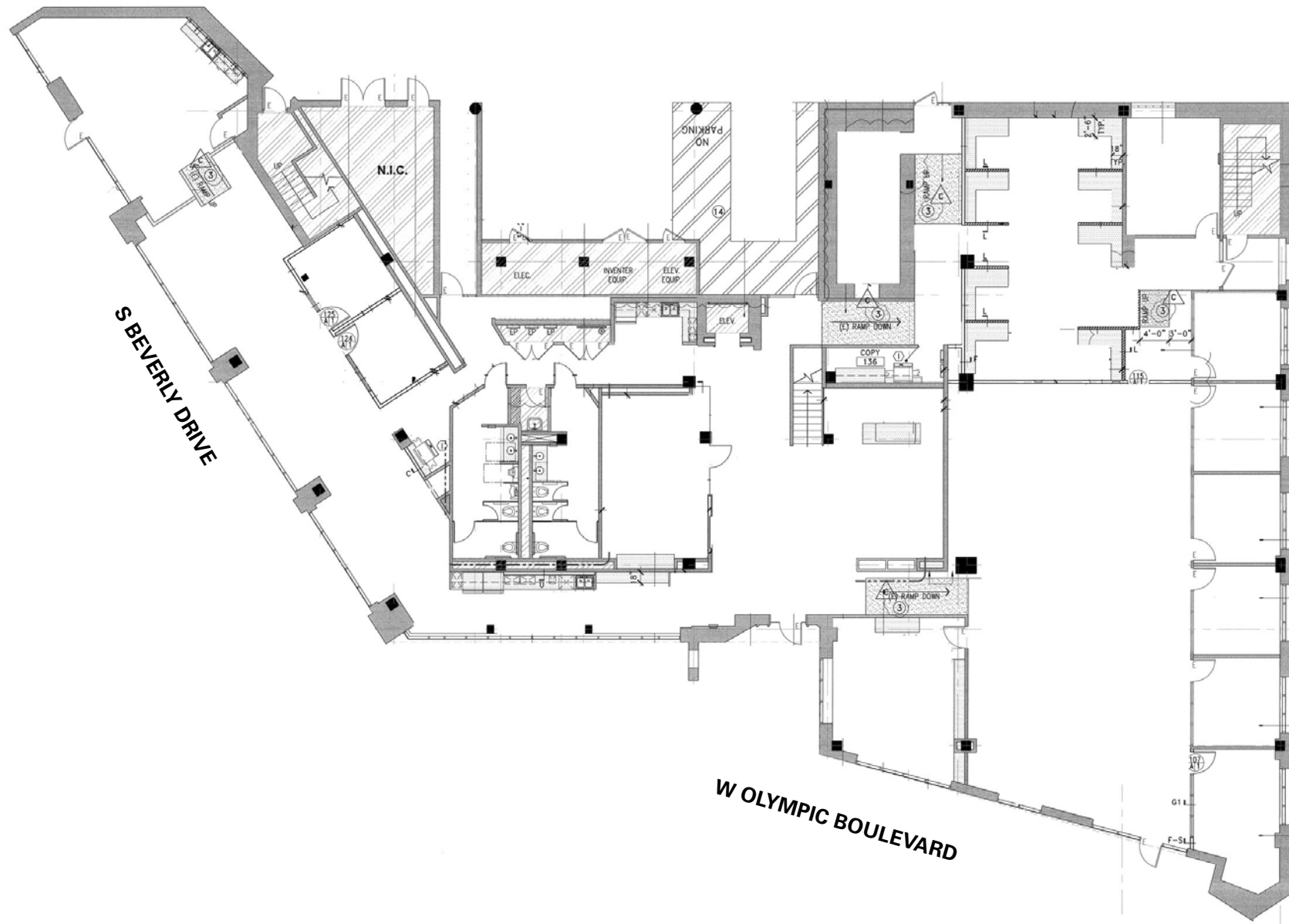
SOUNDPROOF MEETING ROOMS



FLOOR PLAN - 1st Floor - ±11,704 RSF

[CLICK HERE FOR
PROPERTY VIDEO](#)

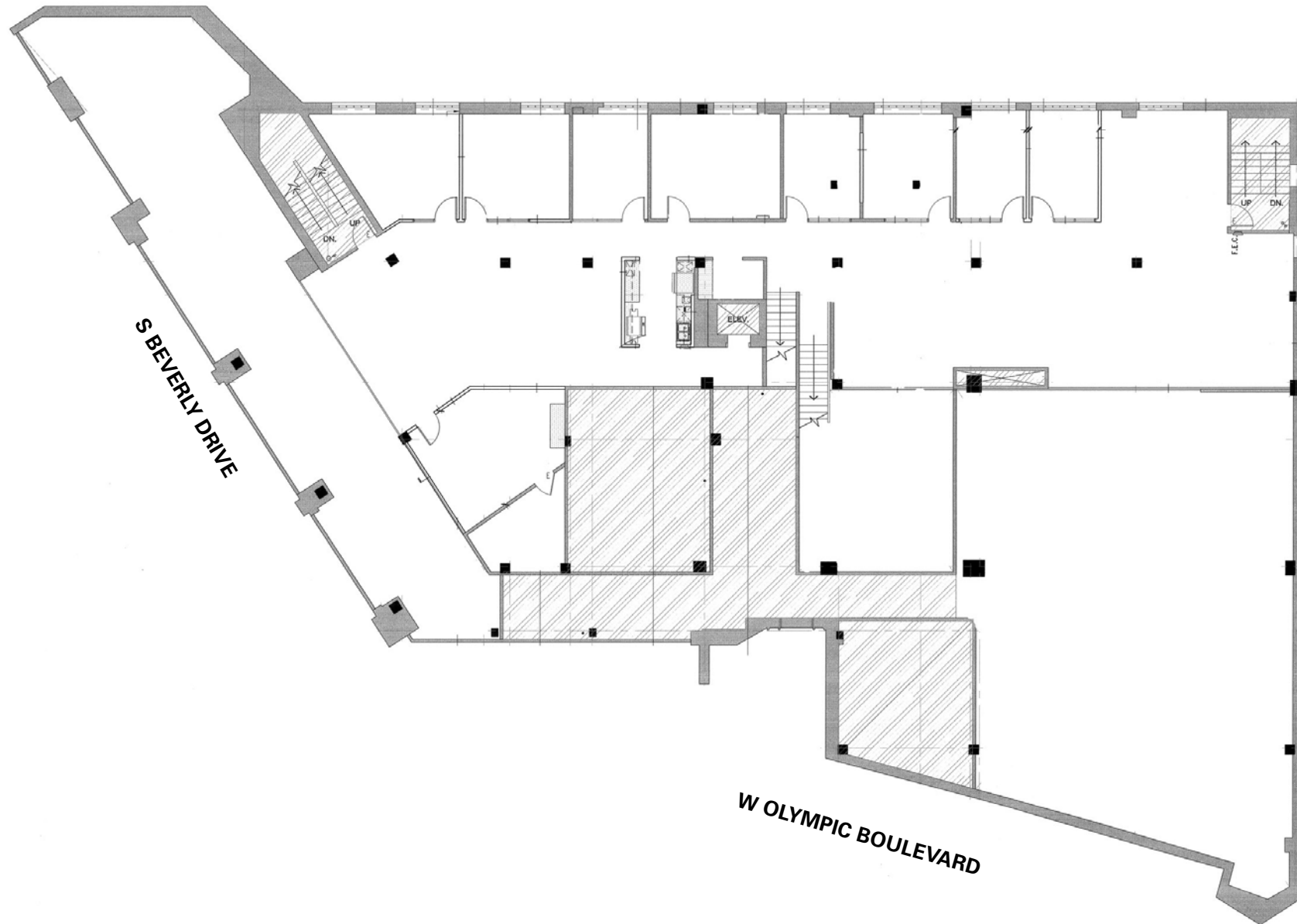
SUITE INFORMATION



FLOOR PLAN - Mezzanine - $\pm 5,822$ RSF

[CLICK HERE FOR
PROPERTY VIDEO](#)

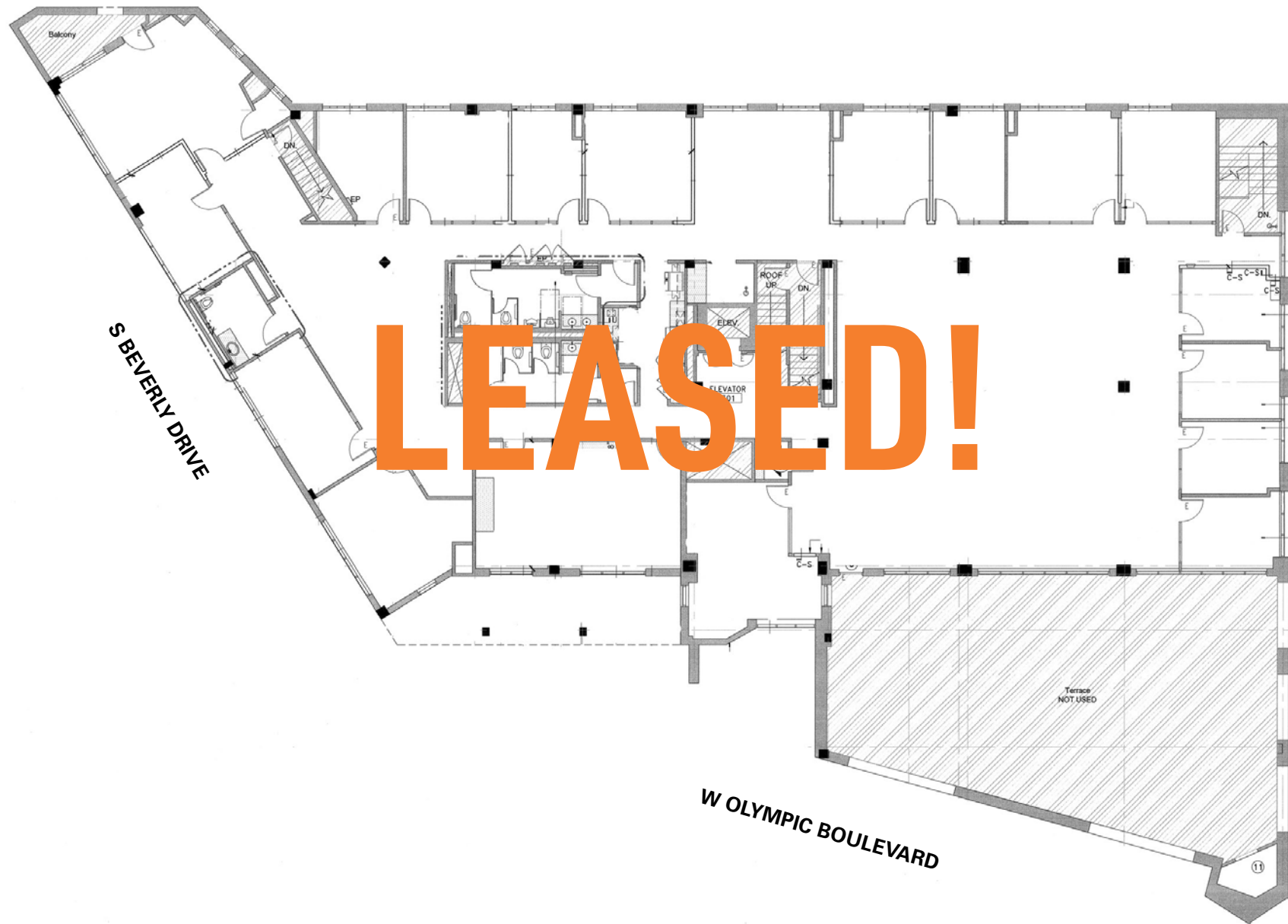
SUITE INFORMATION



FLOOR PLAN - 3rd Floor - ±9,971 RSF

[CLICK HERE FOR
PROPERTY VIDEO](#)

SUITE INFORMATION



AMENITY MAP



AREA NEIGHBORS



