

STAND ALONE BUILDING AVAILABLE

IN BEVERLY HILLS

446-448 S. CANON DRIVE, BEVERLY HILLS, CA 90212

REDUCED
RENTAL
RATE



SPACE INFORMATION

46

PATIO
SPACE ON
BOTH LEVELS

Space in building is highly improved with floor to ceiling glass, bathroom, marble entry, three window offices, conference, interior offices, and many other above standard improvements. One block South of Olympic Blvd fronting on Beverly Dr. Located just outside of the famous Beverly Hills triangle and near to many restaurants and shops.

RENTAL RATE

\$3.75 PSF/MO, MG

SPACE

±7,814 SF TOTAL

1ST FLOOR: ±3,687 SF

2ND FLOOR: ±3,992 SF

PARKING

4 SPACES AT \$125/CAR

IN ADDITION MONTHLY PARKING

AVAILABLE AT THE

NEIGHBORING BUILDINGS

TERM

NEGOTIABLE

AVAILABILITY

IMMEDIATELY

446 - 448 S. CANON DRIVE, BEVERLY HILLS, CA 90212

NEARBY AMENITIES



FRIDA
MEXICAN CUISINE

SOUTH BEVERLY GRILL



SUGARED
+
BRONZED

Annebough



MK
DIAMONDS & JEWELRY



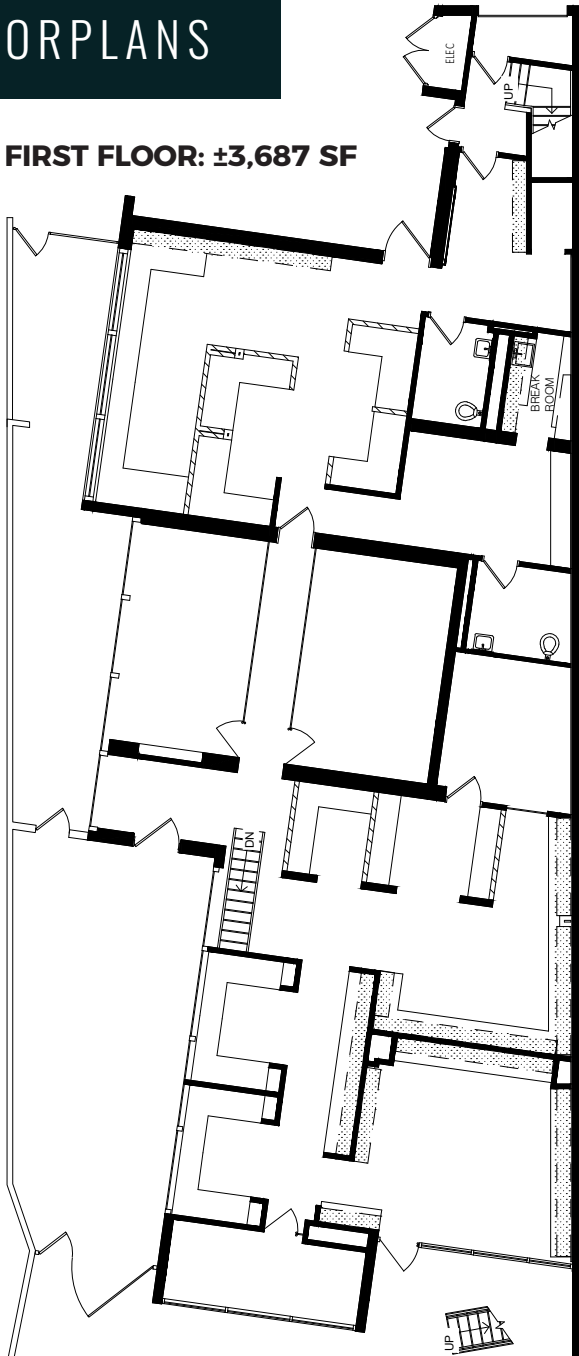
Luther Burbank
Savings

matú

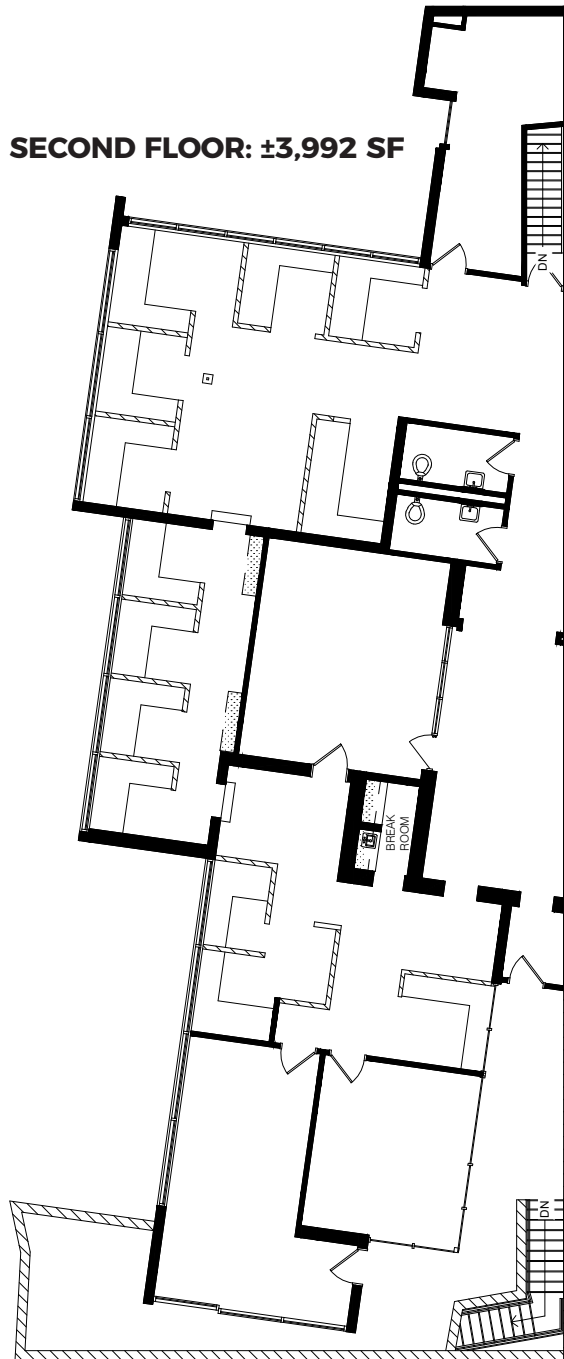
446 - 448 S. CANON DRIVE, BEVERLY HILLS, CA 90212

FLOORPLANS

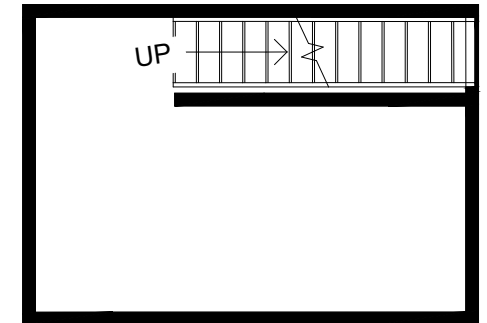
FIRST FLOOR: ±3,687 SF



SECOND FLOOR: ±3,992 SF



BASEMENT: ±162 SF



ADDITIONAL PHOTOS

