

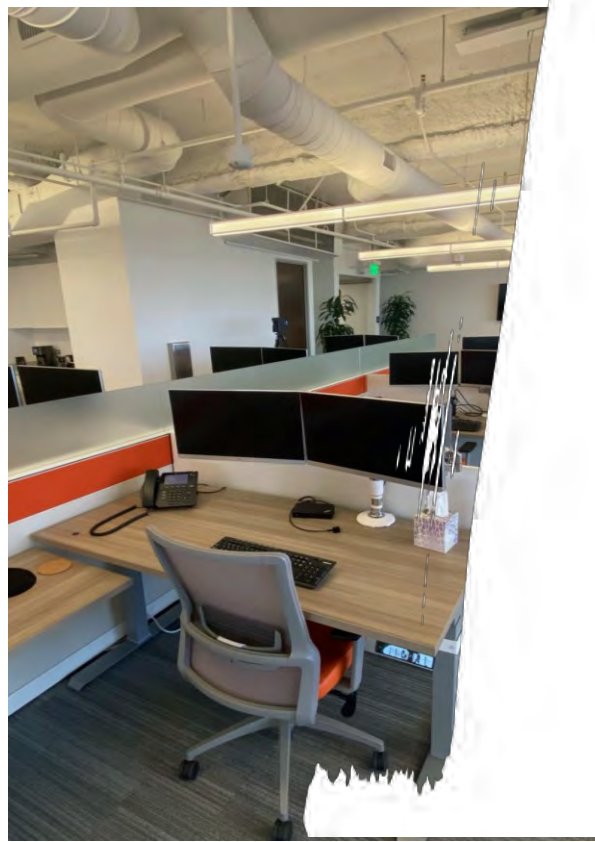


Excellent Century City Sublease

3,887 - 6,687 RSF

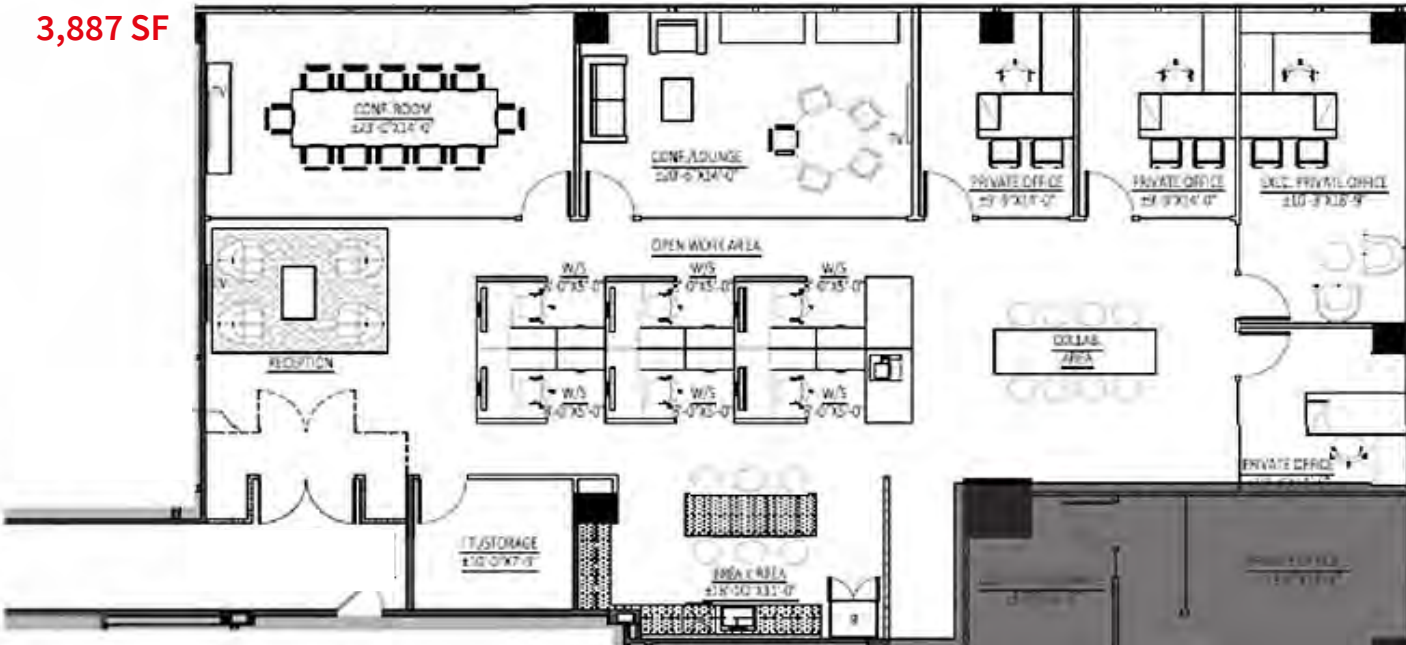
- 11th Floor
- Term: through April 30, 2025
- Rate: Negotiable
- Occupancy: Upon Master Landlord Consent
- Parking: 9 Parking Stalls
- Features:
 - Furniture negotiable (sit stand desks)
 - Large open work area, 1 conference room, 5 window lined offices, kitchen, storage room and IT room.
 - Great natural light
 - Excellent East facing views

**1888 Century Park E
Los Angeles, CA 90067**

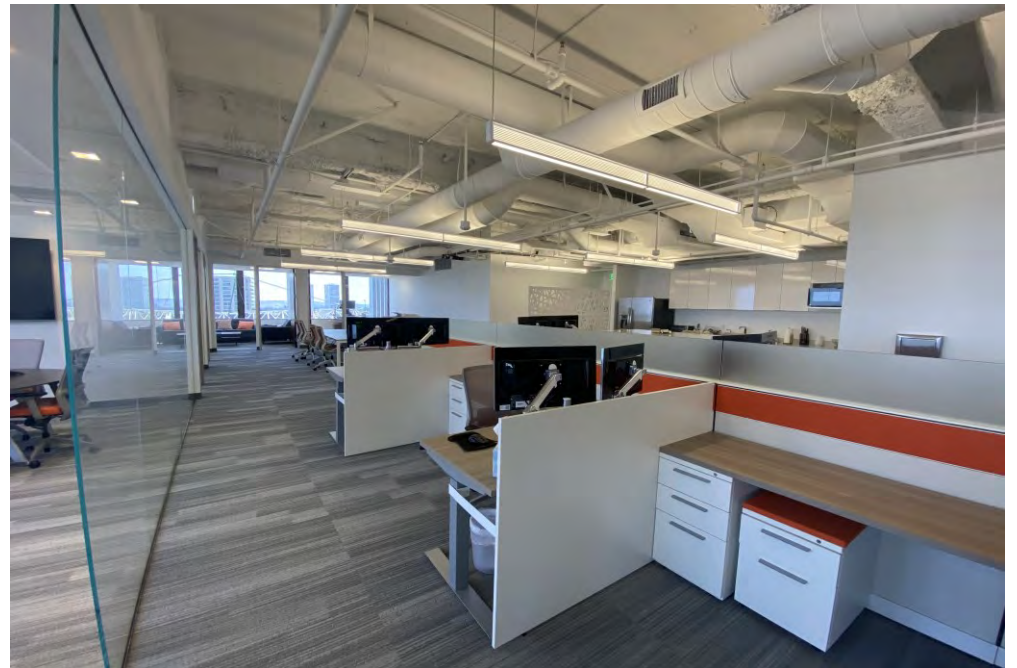


Floor Plan & Space Images

3,887 SF



Space Images



Hypothetical Combined Floor Plan

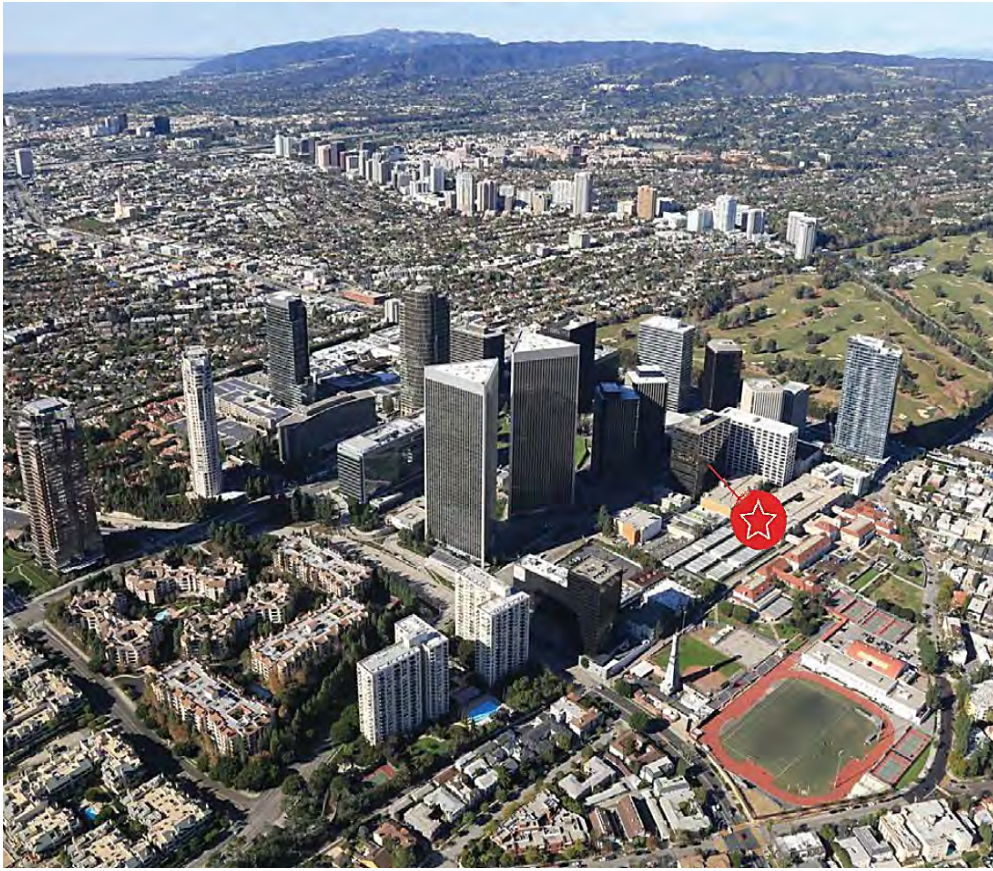
6,687 RSF

Existing Furniture Layout

- (2) Conference Rooms
 - (1) 12-person
 - (1) 8-person
- (2) 5-person Huddle Rooms
- (9) Private Offices
- (9) Workstations
 - *With space to fit +/- (7) more*
- (3) Copy/IT/Storage Areas
- (2) Kitchens
- (2) Double-door entry keycard access points
- (1) Reception



FLOOR LOCATION PLAN



Amenities

- 1888 Century Park E offers 24-hour security and an on-site property management and engineering team.
- On-site amenities include: Greenleaf Café, Caffé Paraggi, Edibles Café, Sundries shop, auto detailing, dry cleaners, flower shop, valet parking, and a bank.
- The Westfield Century City is a short 2 minute walk from the building which offers an additional array of shops, eateries and entertainment.

